



## NATURAL HERBAL PRODUCTS



# *Curcuma comosa*

### Ethnopharmacology

*Curcuma comosa* belongs to ginger family (Zingiberaceae), also known as Wan- chuk-mot-luk in Thai, meaning a rhizome that raises the uterus back to its position.

### Herb for women's health

In Thai traditional medicine, *Curcuma comosa* has a hot odor and taste and is used as a remedy for women, especially those suffering from uterus problems, in order to relieve uterus pain, retain the uterus to its original position and tighten the sagging abdominal surface after childbirth. It also tightens the vagina, normalizes the menstrual cycle, nourishes the uterus and vagina, improves the female libido, moisturizes the vagina and activates vaginal lubrication secretion whilst activating bile secretion, which cures indigestion.

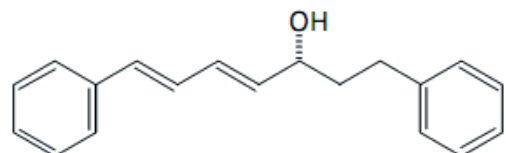
There is a lot of research that supports properties and Thai traditional medicine usage of *Curcuma comosa*. The major active ingredient of *Curcuma comosa* is Diarylheptanoids, which acts as Phytoestrogen and anti-oxidant that helps to prevent and cure ailments such as Osteoporosis,

Arteriosclerosis, Alzheimer's disease, Macular degeneration and so on.

*Curcuma comosa* also has another group of active ingredients known as Phloracetophenone that helps with bile secretion, decreases blood cholesterol, increases plasma high density lipoprotein (HDL), decreases plasma low density lipoprotein (LDL), accelerates lipid mobilization from extrahepatic tissue and increases excretion of cholesterol via the bile for excretion.

### Active compounds from *Curcuma comosa*

The chemical constituents from *Curcuma comosa* consist of phytoestrogen such as Diarylheptanoid, Flavonoid Glycosides and other active constituents such as Sesquiterpenes, Phloracetophenone Glucosides, Labdane Diterpenes



Diarylheptanoid





# NATURAL HERBAL PRODUCTS

## Benefits

- Nourishing the uterus and vagina
- Relieving uterus pain and inflammation
- Preventing memory loss (Alzheimer's disease)
- Reducing lipids and cholesterol in the blood that are risk factor for development of Atherosclerosis and the incidence of Cardiovascular disease
- Anti-oxidative activity
- Tightening vagina and activating vaginal lubrication secretion
- Preventing and treatment of Osteoporosis
- Preventing and treatment of Macular degeneration
- Curing indigestion

## Applications

For your convenience, we have *Curcuma comosa* available in many forms to be used for various kinds of products such as dietary supplement, food & beverages and cosmetics.

- Dried slice
- Crude powder
- Powder extract

## Dosage and Safety

Maximum dose depends on each country's FDA restrict

## Packaging

Standard Package: Plastic bag  
Packaging can be provided in a variety of container types, depending on customs requirements.

## Recommended Storage

Storage in cool and dry place away from light, excessive heat or freezing temperatures  
Shelf life: 2 years

## Documents

We provide copies of Plant information and MSDS





## NATURAL HERBAL PRODUCTS

### Curcuma comosa Dried Chip (non-sterile)

Specification Sheet	
<b>General information</b>	
Product name:	Curcuma comosa Dried Chip
Part of plant:	Tuber
Origin:	Thailand
<b>Physical analysis</b>	
Appearance:	Dried Chip
Color:	Light brownish
Odor:	Woody
Taste:	Mild acrid
<b>Active content analysis (Quantitative analysis)</b>	
Active compounds (mg/100g): (specific data based on COA)	-
<b>Heavy metal analysis</b>	
Arsenic:	< 0.5 ppm
Lead:	< 1 ppm
Cadmium:	< 0.5 ppm
Mercury:	< 0.5 ppm
<b>Pesticide residue analysis</b>	
Organochlorine group:	Not detected
Organophosphate group:	Not detected
Pyrethroid group:	Not detected
Carbamate group:	Not detected
<b>Microbiology analysis</b> (maximum allowable data only, specific data based on COA)	
Aerobic plate count:	<10 <sup>6</sup> CFU/g
Yeast and Mold:	<10 <sup>4</sup> CFU/g
Clostridium pefringens:	Not detected
Escherichia coli:	<100 MPN/g
Coliforms:	Not detected
Pseudomonas aeruginosa:	Not detected
Samonella spp.:	Not detected
Strephylococcus aureus:	Not detected
Streptococcus spp.:	Not detected



**AVA Plant**

Plant of Plants

#### CONTACT

<http://www.avaplant.com>

Tel: +66-844331354

E-mail: [info@avaplant.com](mailto:info@avaplant.com)





## NATURAL HERBAL PRODUCTS

### Curcuma comosa Powder

Specification Sheet	
<b>General information</b>	
Product name:	Curcuma comosa Powder
Part of plant:	Tuber
Origin:	Thailand
<b>Physical analysis</b>	
Appearance:	Powder
Color:	Light brownish
Odor:	Woody
Taste:	Mild acrid
<b>Active content analysis (Quantitative analysis)</b>	
Active compounds (mg/100g): (specific data based on COA)	-
<b>Heavy metal analysis</b>	
Arsenic:	< 0.5 ppm
Lead:	< 1 ppm
Cadmium:	< 0.5 ppm
Mercury:	< 0.5 ppm
<b>Pesticide residue analysis</b>	
Organochlorine group:	Not detected
Organophosphate group:	Not detected
Pyrethroid group:	Not detected
Carbamate group:	Not detected
<b>Microbiology analysis</b> (maximum allowable data only, specific data based on COA)	
Aerobic plate count:	<10 <sup>4</sup> CFU/g
Yeast and Mold:	<100 CFU/g
Clostridium pefringens:	Not detected
Escherichia coli:	<3 MPN/g
Coliforms:	Not detected
Pseudomonas aeruginosa:	Not detected
Samonella spp.:	Not detected
Strephylococcus aureus:	Not detected
Streptococcus spp.:	Not detected



**AVA Plant**

Plant of Plants

#### CONTACT

<http://www.avaplant.com>

Tel: +66-844331354

E-mail: [info@avaplant.com](mailto:info@avaplant.com)





## NATURAL HERBAL PRODUCTS

### Curcuma comosa Extract Powder

Specification Sheet	
<b>General information</b>	
Product name:	Curcuma comosa Extract Powder
Part of plant:	Tuber
Origin:	Thailand
Extract ratio:	8:1
Drying method:	Spray Dry
<b>Physical analysis</b>	
Appearance:	Powder
Color:	brownish
Odor:	Woody
Taste:	Mild acrid
<b>Active content analysis (Quantitative analysis)</b>	
Active compounds (mg/100g): (specific data based on COA)	-
<b>Heavy metal analysis</b>	
Arsenic:	< 0.5 ppm
Lead:	< 1 ppm
Cadmium:	Not detected
Mercury:	Not detected
<b>Pesticide residue analysis</b>	
Organochlorine group:	Not detected
Organophosphate group:	Not detected
Pyrethroid group:	Not detected
Carbamate group:	Not detected
<b>Microbiology analysis</b> (maximum allowable data only, specific data based on COA)	
Aerobic plate count:	<10 <sup>4</sup> CFU/g
Yeast and Mold:	<100 CFU/g
Clostridium pefringens:	Not detected
Escherichia coli:	<3 MPN/g
Coliforms:	Not detected
Pseudomonas aeruginosa:	Not detected
Samonella spp.:	Not detected
Strephylococcus aureus:	Not detected
Streptococcus spp.:	Not detected



**AVA Plant**

Plant of Plants

#### CONTACT

<http://www.avaplant.com>

Tel: +66-844331354

E-mail: [info@avaplant.com](mailto:info@avaplant.com)

