



NATURAL HERBAL PRODUCTS

Kwao Krua Dang (*Butea superba*)



Androgen Hormones: Source of Men's Power

Androgen is the hormone that stimulates or controls the development and maintenance of male characteristics such as increased muscle mass and strength, enlargement of the penis, sperm production and etc.

Male Menopause (Andropause): The Reduction of Male Sex Hormones

Normally, the Testosterone to Estrogen ratio in adult male is about 50:1 and gradually decreases to around 20:1 although it can decrease by up to 8:1 depending on age.

The effects that mostly occur are depression, loss of energy and concentration, mood swings, loss of muscle tone, loss of libido and potency, erectile dysfunction, hair loss and other symptoms.

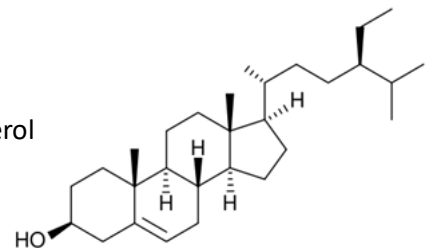
Phyto-androgens: the Hormones from Nature

Butea superba is a native herb of Thailand that has been using as rejuvenation and aphrodisiac herb for over 100 years due to its hormone stimulating mechanism from its chemical constituents that act like androgen hormones. (Androgenic effect)

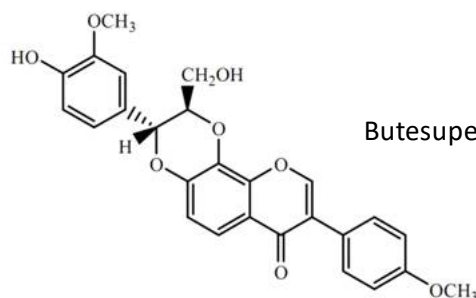
Chemical Constituents from *Butea superba*

The chemical constituents from *Butea superba* consist of flavonoids, flavonoid glycosides and phytosterols such as Butesuperins A and B, beta-sitosterol, campesterol, stigmasterol and others.

Beta-sitosterol



Butesuperin





NATURAL HERBAL PRODUCTS

Benefits

- Androgenic effect and anti-estrogenic activity (aphrodisiac effect)
- Improving penile erection
- Increasing sperm quantity, motility and Concentration
- Increasing hair growth
- Immuno-stimulating action

Applications

For your convenience, we have Butea superba available in many forms to be used for various kinds of products such as dietary supplement, food & beverages and cosmetics.

- Crude Powder
- Extract Liquid
- Extract Powder

Quality Control

Puerarin, Daidzin, Genistin, Daidzein and Genistein is the Isoflavones which are used for standardization of crude extract by HPLC analysis and also use for control a quality as marker.

Dosage and Safety

- Maximum dose depends on each country's FDA restrict
- Should not use if under 25 years of age, who are diagnosed with Hypertension, tumors/cancer in Prostate and Benign Prostatic Hyperplasia (BPH)

Packaging

Standard Package: Plastic vacuum bag
Plastic gallon container

Packaging can be provided in a variety of container types, depending on customs requirements.

Recommended Storage

Storage in cool and dry place away from light, excessive heat or freezing temperatures
Shelf life: 2 years

Documents

We provide copies of Specification Sheet, MSDS, Plant information and HPLC analysis report





NATURAL HERBAL PRODUCTS

Kwao Krua Dang (*Butea superba*) Dry Slice (non-sterile)

Specification Sheet	
General information	
Product name:	Kwao Krua Dang (<i>Butea superba</i>) Dry Slice
Part of plant:	Tuber/root
Origin:	Thailand
Physical analysis	
Appearance:	Dry slice
Color:	Brownish
Odor:	Woody
Taste:	Slightly sweet
Active content analysis (Quantitative analysis)	
Active compounds (mg/100g): (specific data based on COA)	Total 5 Isoflavones not less than 30 mg% (Puerarin, Genistin, Daidzin, Genistein, Daidzein)
Heavy metal analysis	
Arsenic:	< 0.5 ppm
Lead:	< 1 ppm
Cadmium:	< 1 ppm
Mercury:	< 0.5 ppm
Pesticide residue analysis	
Organochlorine group:	Not detected
Organophosphate group:	Not detected
Pyrethroid group:	Not detected
Carbamate group:	Not detected
Microbiology analysis (maximum allowable data only, specific data based on COA)	
Total aerobic plate count:	<10 ⁶ cfu/g
Yeast and Mold:	<10 ³ cfu /g
Clostridium pefringens:	<10 cfu /g
Escherichia coli:	<10 MPN/g
Coliforms:	<10 ³ MPN/g
Pseudomonas aeruginosa:	Not detected
Samonella spp.:	Not detected
Strephylococcus aureus:	< 10 cfu/g
Streptococcus spp.:	Not detected

Revision Date: 12/05/2015; 16:00 h.





NATURAL HERBAL PRODUCTS

Kwao Krua Dang (*Butea superba*) Powder

Specification Sheet	
General information	
Product name:	Kwao Krua Dang (<i>Butea superba</i>) Powder
Part of plant:	Tuber/root
Origin:	Thailand
Physical analysis	
Appearance:	Powder
Color:	Red to brownish
Odor:	Woody
Taste:	Slightly sweet
Active content analysis (Quantitative analysis)	
Active compounds (mg/100g): (specific data based on COA)	Total 5 Isoflavones not less than 30 mg% (Puerarin, Genistin, Daidzin, Genistein, Daidzein)
Heavy metal analysis	
Arsenic:	< 0.5 ppm
Lead:	< 1 ppm
Cadmium:	< 1 ppm
Mercury:	< 0.5 ppm
Pesticide residue analysis	
Organochlorine group:	Not detected
Organophosphate group:	Not detected
Pyrethroid group:	Not detected
Carbamate group:	Not detected
Microbiology analysis (maximum allowable data only, specific data based on COA)	
Aerobic plate count:	<10 ⁴ CFU/g
Yeast and Mold:	<100 CFU/g
Clostridium pefringens:	Not detected
Escherichia coli:	<3 MPN/g
Coliforms:	Not detected
Pseudomonas aeruginosa:	Not detected
Samonella spp.:	Not detected
Strephylococcus aureus:	Not detected
Streptococcus spp.:	Not detected

Revision Date: 12/05/2015; 16:00 h.





NATURAL HERBAL PRODUCTS

Kwao Krua Dang (*Butea superba*) Powder Premium

Specification Sheet	
General information	
Product name:	Kwao Krua Dang (<i>Butea superba</i>) Powder Premium
Part of plant:	Tuber/root
Origin:	Thailand
Physical analysis	
Appearance:	Powder
Color:	Red to brownish
Odor:	Woody
Taste:	Slightly sweet
Active content analysis (Quantitative analysis)	
Active compounds (mg/100g): (specific data based on COA)	Total 5 Isoflavones not less than 100 mg% (Puerarin, Genistin, Daidzin, Genistein, Daidzein)
Heavy metal analysis	
Arsenic:	< 0.5 ppm
Lead:	< 1 ppm
Cadmium:	< 1 ppm
Mercury:	< 0.5 ppm
Pesticide residue analysis	
Organochlorine group:	Not detected
Organophosphate group:	Not detected
Pyrethroid group:	Not detected
Carbamate group:	Not detected
Microbiology analysis (maximum allowable data only, specific data based on COA)	
Aerobic plate count:	<10 ⁴ CFU/g
Yeast and Mold:	<100 CFU/g
Clostridium pefringens:	Not detected
Escherichia coli:	<3 MPN/g
Coliforms:	Not detected
Pseudomonas aeruginosa:	Not detected
Samonella spp.:	Not detected
Strephylococcus aureus:	Not detected
Streptococcus spp.:	Not detected

Revision Date: 07/06/2018; 14:40 h.





NATURAL HERBAL PRODUCTS

Kwao Krua Dang (*Butea superba*) Extract Liquid

Specification Sheet	
General information	
Product name:	Kwao Krua Dang (<i>Butea superba</i>) Extract Liquid
Part of plant:	Tuber/root
Origin:	Thailand
Method of extraction:	Supercritical Fluid Extraction with CO ₂
Physical analysis	
Appearance:	Colloid solution
Color:	Red brown
Odor:	Woody
Taste:	Bitter
Active content analysis (Quantitative analysis)	
Active compounds (mg/100mL): (specific data based on COA)	Total 5 Isoflavones not less than 50 mg% (Puerarin, Genistin, Daidzin, Genistein, Daidzein)
Heavy metal analysis	
Arsenic:	< 2 ppm
Lead:	<1 ppm
Cadmium:	< 1 ppm
Mercury:	< 0.5 ppm
Microbiology analysis (maximum allowable data only, specific data based on COA)	
Total aerobic plate count:	<10 ⁴ CFU/mL
Yeast and Mold:	< 100 CFU/mL
Clostridium pefringens:	Not detected
Escherichia coli:	< 3 MPN/mL
Coliforms:	Not detected
Pseudomonas aeruginosa:	Not detected
Samonella spp.:	Not detected
Strephylococcus aureus:	Not detected
Streptococcus spp.:	Not detected

Revision Date: 12/05/2017; 14:00 h.





NATURAL HERBAL PRODUCTS

Kwao Krua Dang (*Butea superba*) Extract Powder

Specification Sheet	
General information	
Product name:	Kwao Krua Dang (<i>Butea superba</i>) Extract Powder
Part of plant:	Tuber/root
Origin:	Thailand
Method of extraction:	Supercritical Fluid Extraction with CO ₂
Physical analysis	
Appearance:	Powder
Color:	Brown
Odor:	Woody
Taste:	Slightly sweet
Active content analysis (Quantitative analysis)	
Active compounds (mg/100g): (specific data based on COA)	Total 5 Isoflavones not less than 500 mg% (Puerarin, Genistin, Daidzin, Genistein, Daidzein)
Heavy metal analysis	
Arsenic:	< 2 ppm
Lead:	< 1 ppm
Cadmium:	< 1 ppm
Mercury:	< 0.5 ppm
Microbiology analysis (maximum allowable data only, specific data based on COA)	
Total aerobic plate count:	<10 ³ CFU/g
Yeast and Mold:	<10 CFU/g
Clostridium pefringens:	Not detected
Escherichia coli:	<3 MPN/g
Coliforms:	Not detected
Pseudomonas aeruginosa:	Not detected
Samonella spp.:	Not detected
Strephylococcus aureus:	Not detected
Streptococcus spp.:	Not detected

Revision Date: 31/05/2021; 16:30 h.

