



NATURAL HERBAL PRODUCTS

Kwao Krua Kao (*Pueraria mirifica*)



Hormones are the Crucial Factor

Upon reaching the reproductive age, estrogens in women are produced to encourage the development of female secondary sexual characteristics such as smooth skin, enlargement of breasts and aspects of regulating the menstrual cycle.

Furthermore, a variety of other structural changes are induced by estrogen in addition to bodily functions such as helping Vitamin D combine with calcium for bone formation.

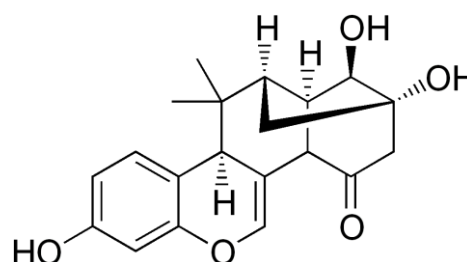
During the female menopause, ovaries produce less estrogen and progesterone. The reduction in hormones cause menopausal symptoms such as hot flashes, so on.

Phytoestrogens: Hormones from Nature

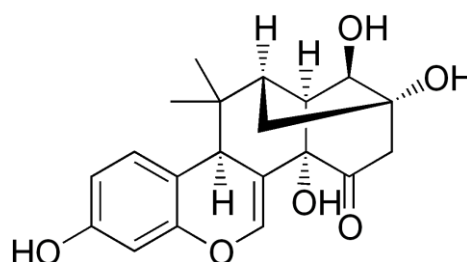
Phytoestrogens or plant's hormones are the alternative for replacing human hormones when reaching the menopause. Phytoestrogens are plant-derived compounds, which function as the primary sex hormone. Also, ***Pueraria mirifica* is the best in class** of Phytoestrogen plant.

Active Compounds from *Pueraria mirifica*

Deoxymiroestrol and Miroestrol are phytoestrogens, found only in *Pueraria mirifica*. They are much stronger than soy or red clover isoflavones.



Deoxymiroestrol



Miroestrol

Moreover, there also have many phytoestrogens such as Daidzein, Genistein, Daidazin, Genistin, Puerarin, Mirificin and Kwakhurin





NATURAL HERBAL PRODUCTS

Benefits

- Rejuvenating the body and maintaining liveliness
- Darkening hair and boosting hair growth
- Aid in tackling the memory loss problem by increasing synaptic protein
- Reducing lipids in the blood, which are the risk factor in the development of atherosclerosis and the incidence of cardiovascular disease.
- Prevention of bone loss
- Anti-tumor
- Antioxidant action
- Breast enhancement and firmness

Applications

For your convenience, we have Pueraria mirifica available in many forms to be used for various kinds of products such as dietary supplement, food & beverages and cosmetics.

- Crude powder
- Extract liquid
- Extract powder

Quality Control

Puerarin, Daizein, Diazin, Genistin and Genistein are the isoflavones, which are used for standardization of crude extract by HPLC analysis and for controlling quality as marker.

Dosage and Safety

- Maximum dose depends on each country's FDA restrictions.
- Beware of using Pueraria mirifica together with contraceptive pills.
- Use is not recommended for women under 25 years, pregnant women or nursing mothers, women diagnosed with tumors in ovary, uterus or/and breast.

Packaging

Standard Package: Plastic vacuum bag
Plastic gallon container

Packaging can be provided in a variety of container types, depending on customs requirements.

Recommended Storage

Storage in cool and dry place away from light, excessive heat or freezing temperatures

Shelf life: 2 years

Documents

We provide copies of Specification Sheet, MSDS, Plant information and HPLC analysis report.





NATURAL HERBAL PRODUCTS

Kwao Krua Kao (*Pueraria mirifica*) Dry Slice (non-sterile)

Specification Sheet	
General information	
Product name:	Kwao Krua Kao (<i>Pueraria mirifica</i>) Dry Slice
Part of plant:	Tuber/root
Origin:	Thailand
Physical analysis	
Appearance:	Dry slice
Color:	White to yellowish
Odor:	Woody
Taste:	Slightly sweet
Active content analysis (Quantitative analysis)	
Active compounds (mg/100g): (specific data based on COA)	Puerarin not less than 30 mg.
Heavy metal analysis	
Arsenic:	< 0.5 ppm
Lead:	< 1 ppm
Cadmium:	< 0.5 ppm
Mercury:	< 0.5 ppm
Pesticide residue analysis	
Organochlorine group:	Not detected
Organophosphate group:	Not detected
Pyrethroid group:	Not detected
Carbamate group:	Not detected
Microbiology analysis	
Total aerobic plate count:	<10 ⁶ cfu/g
Yeast and Mold:	<10 ³ cfu /g
Clostridium pefringens:	<10 cfu /g
Escherichia coli:	<10 MPN/g
Coliforms:	<10 ³ MPN/g
Pseudomonas aeruginosa:	Not detected
Samonella spp.:	Not detected
Strephylococcus aureus:	< 10 cfu/g
Streptococcus spp.:	Not detected

Revision Date: 14/10/2014; 10:35 h.



AVA Plant

Plant of Plants

CONTACT

<http://www.avaplant.com>

Tel: +66-844331354

E-mail: info@avaplant.com





NATURAL HERBAL PRODUCTS

Kwao Krua Kao (*Pueraria mirifica*) Powder

Specification Sheet	
General information	
Product name:	Kwao Krua Kao (<i>Pueraria mirifica</i>) Powder
Part of plant:	Tuber/root
Origin:	Thailand
Disinfection method:	Gamma irradiation
Physical analysis	
Appearance:	Powder
Color:	White to yellowish
Odor:	Woody
Taste:	Slightly sweet
Active content analysis (Quantitative analysis)	
Active compounds (mg/100g): (specific data based on COA)	Puerarin not less than 30 mg.
Heavy metal analysis	
Arsenic:	< 0.5 ppm
Lead:	< 1 ppm
Cadmium:	< 0.5 ppm
Mercury:	< 0.5 ppm
Pesticide residue analysis	
Organochlorine group:	Not detected
Organophosphate group:	Not detected
Pyrethroid group:	Not detected
Carbamate group:	Not detected
Microbiology analysis (maximum allowable data only, specific data based on COA)	
Aerobic plate count:	<10 ⁴ CFU/g
Yeast and Mold:	<100 CFU/g
Clostridium pefringens:	Not detected
Escherichia coli:	<3 MPN/g
Coliforms:	Not detected
Pseudomonas aeroginosa:	Not detected
Samonella spp.:	Not detected
Strephylococcus aureus:	Not detected
Streptococcus spp.:	Not detected

Revision Date: 14/10/2014; 10:35 h.



AVA Plant

Plant of Plants

CONTACT

<http://www.avaplant.com>

Tel: +66-844331354

E-mail: info@avaplant.com





NATURAL HERBAL PRODUCTS

Kwao Krua Kao (*Pueraria mirifica*) Dry Slice / Powder Premium

Specification Sheet	
General information	
Product name:	Kwao Krua Kao (<i>Pueraria mirifica</i>) Dry Slice / Powder Premium
Part of plant:	Tuber/root
Origin:	Thailand
Physical analysis	
Appearance:	Powder
Color:	White to brownish
Odor:	Woody
Taste:	Slightly sweet
Active content analysis (Quantitative analysis)	
Active compounds (mg/100g): (specific data based on COA)	Puerarin not less than 100 mg.
Heavy metal analysis	
Arsenic:	< 2 ppm
Lead:	< 1 ppm
Cadmium:	< 0.5 ppm
Mercury:	< 0.5 ppm
Pesticide residue analysis	
Organochlorine group:	Not detected
Organophosphate group:	Not detected
Pyrethroid group:	Not detected
Carbamate group:	Not detected
Microbiology analysis (maximum allowable data only, specific data based on COA)	
Aerobic plate count:	< 10 ⁵ CFU/g
Yeast and Mold:	< 10 ³ CFU/g
Enterobacteria:	< 10 ² CFU/g
Escherichia coli:	< 10 MPN/g
Samonella spp.:	Not detected

Revision Date: 15/12/2015; 15:30 h.



AVA Plant | Plant of Plants

CONTACT
<http://www.avaplant.com>
Tel: +66-844331354
E-mail: info@avaplant.com





NATURAL HERBAL PRODUCTS

Kwao Krua Kao (*Pueraria mirifica*) Extract Liquid

Specification Sheet	
General information	
Product name:	Kwao Krua Kao (<i>Pueraria mirifica</i>) Extract Liquid
Part of plant:	Tuber/root
Origin:	Thailand
Method of extraction:	Supercritical Fluid Extraction with CO ₂
Physical analysis	
Appearance:	Clear solution
Color:	Yellow to brownish
Odor:	Woody
Taste:	Bitter
Active content analysis (Quantitative analysis)	
Active compounds (mg/100mL): (specific data based on COA)	Puerarin not less than 30 mg.
Heavy metal analysis	
Arsenic:	<2 ppm
Lead:	<1 ppm
Cadmium:	Not detected
Mercury:	Not detected
Pesticide residue analysis	
Organochlorine group:	Not detected
Organophosphate group:	Not detected
Pyrethroid group:	Not detected
Carbamate group:	Not detected
Microbiology analysis (maximum allowable data only, specific data based on COA)	
Total aerobic plate count:	<10 ³ CFU/mL
Yeast and Mold:	<10 CFU/mL
Clostridium pefringens:	Not detected
Escherichia coli:	<3MPN/mL
Coliforms:	<1 CFU/mL
Pseudomonas aeruginosa:	Not detected
Samonella spp.:	Not detected
Strephylococcus aureus:	Not detected
Streptococcus spp.:	Not detected

Revision Date: 14/10/2014; 10:35 h.



AVA Plant

Plant of Plants

CONTACT

<http://www.avaplant.com>

Tel: +66-844331354

E-mail: info@avaplant.com





NATURAL HERBAL PRODUCTS

Kwao Krua Kao (*Pueraria mirifica*) Extract Powder

Specification Sheet	
General information	
Product name:	Kwao Krua Kao (<i>Pueraria mirifica</i>) Extract Powder
Part of plant:	Tuber/root
Origin:	Thailand
Method of extraction:	Supercritical Fluid Extraction with CO ₂
Method of drying:	Spray Drying
Physical analysis	
Appearance:	Powder
Color:	Off-white to light yellowish
Odor:	Woody
Taste:	Slightly bitter
Active content analysis (Quantitative analysis)	
Active compounds (mg/100g): (specific data based on COA)	Puerarin not less than 150 mg.
Heavy metal analysis	
Arsenic:	<2 ppm
Lead:	<1 ppm
Cadmium:	Not detected
Mercury:	Not detected
Microbiology analysis (maximum allowable data only, specific data based on COA)	
Total aerobic plate count:	<10 ³ CFU/g
Yeast and Mold:	<100 CFU/g
Clostridium pefringens:	Not detected
Escherichia coli:	<3 MPN/g
Coliforms:	Not detected
Pseudomonas aeroginosa:	Not detected
Samonella spp.:	Not detected
Strephylococcus aureus:	Not detected
Streptococcus spp.:	Not detected

Revision Date: 14/10/2014; 10:35 h.

